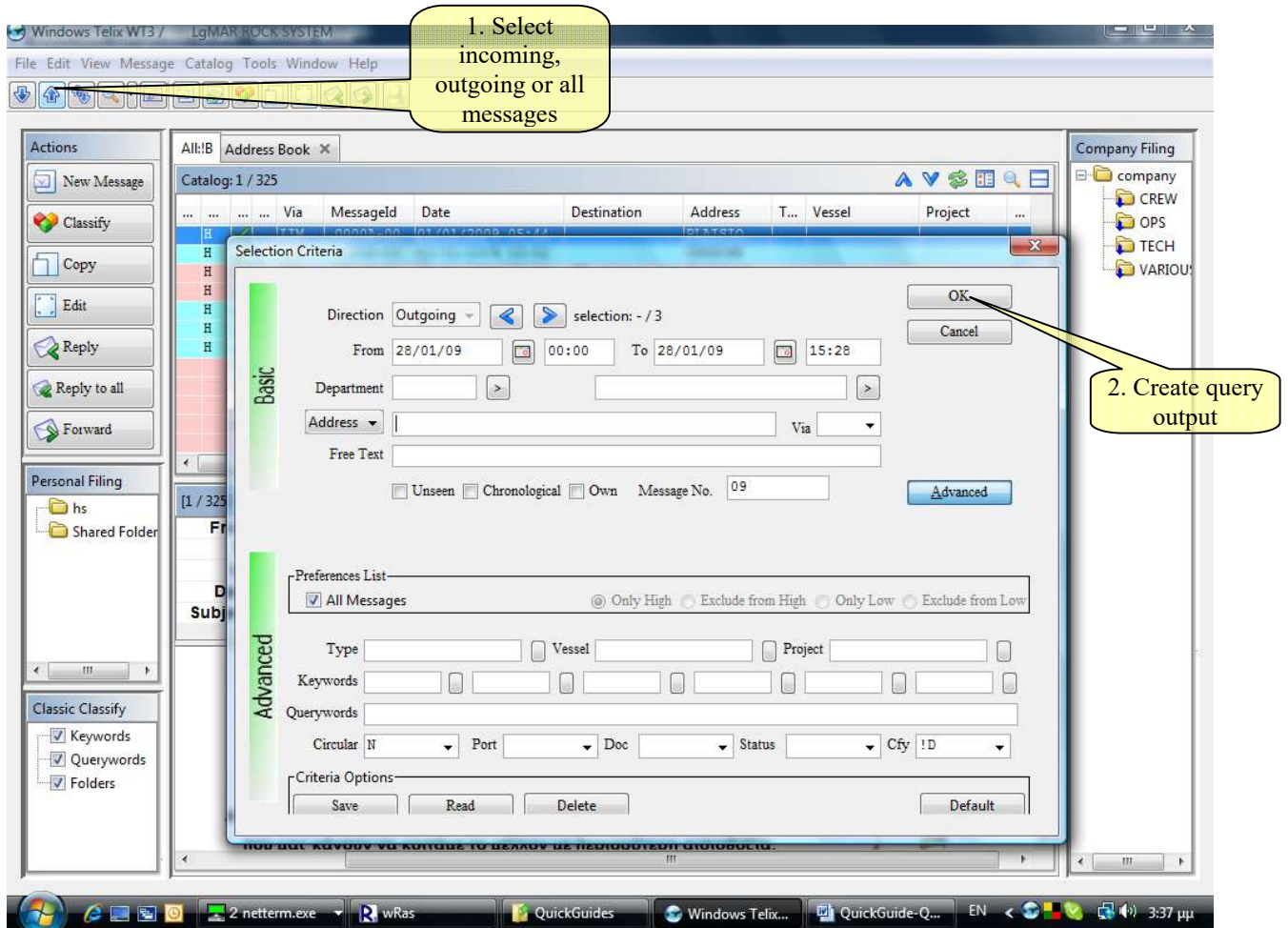


How to generate a new query in a new tab

The default catalog(first tab) always shows the results of the opening query. If you wish to select messages in a new tab and keep the main catalog at the same time, you can use the following steps.



Explanation:

1.	Evoked query criteria menu (for incoming, outgoing or all messages in a new tab) and type the selection criteria.
2.	Press OK to generate the query output.